

COMPANY  
PROFILE  
2019







10t mlhe

# TABLE OF CONTENTS

1. General	1
2. Address	2
2.1. Head Office	
2.2. Office	
2.3. Workshop	
3. Lines of Business	3 - 4
3.1. Engineering	
3.2. Site Construction	
3.3. Fabrication of Processing Equipment	
3.4. Gaseous Tank	
3.5. Transportation Equipment	
3.6. Miscellaneous	
3.7. Compressed Natural Gas (CNG) Plant E-c	
4. Capability	5 - 6
4.1. Annual Capacity	
4.2. Material	
4.3. Code/Standard & Applicable	
5. Facilities	7 - 8
5.1. Area of Facilities (Factory)	
5.2. Transportation	
5.3. List of Machines	
6. Location Map	9 - 10



# 1-GENERAL

## PT METAL HITECH ENGINEERING

NPWP : 02.458.298.3-604.000  
Bergerak Di Bidang : Bejana Tekan, LPG Tabung, Karosserie  
Akte Pendirian : Akte Notaris Setiawati Sabarudin No.41, Tgl 29 Juli 2006  
SK. Menteri Hukum & HAM RI No. W10-00102 HT.01.01 - TH. 2006  
Akte Notaris Maria Lucia Lindhajany No.81, Tgl 26 April 2012  
SK. Menteri Hukum & HAM RI No. AHU - 33623.A.H.01.02 - TH. 2012  
Ijin HO : 503.02/145/437.74/2009  
Ijin Usaha Industri : 503/6915.A/436.6.11/2012  
No. Rekening Bank : 14001 0059 8953, BANK MANDIRI - Surabaya  
Sertifikat :  
- ASME "U" (No. 54.186)  
- ISO 9001:2008 (No. 01 100 1327137)  
- BS OHSAS 18001:2007 (No. 01 113 1327 137)  
- SKT Migas (No. 2043/ket/19.11/DMT/2018)  
- SKT/Vendor Pertamina (No. 1732/F20200/2017-S3)

# 2-ADDRESS

## WORKSHOP

Jl. Raya Cerme Metatu Km.4  
Desa Dungus, Kec. Cerme, Kab. Gresik

## HEAD OFFICE

Jl. Darmo Baru Barat 3 / 31  
Surabaya 60189 - Jawa Timur - Indonesia  
E-mail : michael@metalhitech.co.id  
Website : www.metalhitech.co.id  
Contact Person : Michael (+6281 2311 5791)

## OFFICE

Jl. Darmo Baru Barat 3 /40  
Surabaya 60189 - Jawa Timur - Indonesia  
Telepon : +6231 732 1723  
Fax : +6231 732 1723

The logo for ELPIJI, featuring the word "ELPIJI" in a bold, white, sans-serif font inside a dark blue, stylized shape that resembles a flame or a shield.



# 3-LINES OF BUSINESS

## ENGINEERING

- Equipment and Plant Layout Design
- Mechanical Strength Calculation
- Process Engineering Calculation :
  - > Mixing Calculation
  - > Heat Transfer Calculation
  - > Piping Calculation
  - > Conveying System Calculation
  - > Separating System Calculation
  - > Drying System Calculation

## SITE CONSTRUCTION

- Field Erection
- Equipment Installation
- Piping Works

## FABRICATION OF PROCESSING EQUIPMENT

- Pressure / Vacuum Vessel and Steam Separatus
- Shell & Tube Heat Exchanger
- Mixer Tank
- Reactor Tank
- Filter
- Crystallizer
- Fermenter
- Scrubber
- Coloumn
- Silo
- Storage Tank
- Pneumatic / Mechanical Conveyor
- Steam Coil Tank



## GASEOUS TANK

- LPG / LGV Storage Tank : up to 200 tons
- LPG / LGV Transport Tank : up to 15 tons for domestic up to 23 tons for export Depend on local regulation
- Ammonia Storage Tank
- CO2 Storage Tank

## TRANSPORTATION EQUIPMENT

- LPG, LGV, NH3, CO2 Bulk Tanks Transporter
- Heavy Dump Trailer : up to 150 tons
- Dump Truck : up to 100 tons
- Heavy Dump Truck : up to 120 tons
- Special Transport System

## MISCELLANEOUS

- Ship accessories (Ladder, Hatch Cover, etc.)
- High temperature flare system
- Main Tube Flare System

## COMPRESSED NATURAL GAS (CNG) PLANT EPC

- Plant design
- Piping and utility system
- Gas Compressor, scrubber, Cooling and Flare system (up to 6 MMSCFD)





# 4-CAPABILITY



## ANNUAL CAPACITY

- Stainless Steel: 2,000 tons / year
- Carbon Steel : 2,000 tons / year

## STANDARD & APPLICABLE

- ASME Section VIII Div. 1
- API Standard 650
- API Standard 620
- TEMA - R, C, B
- DIN (AD - Merkblatt)
- JIS B 8243

## MATERIAL

### Stainless Steel

- Grade 304
- Grade 304 L
- Grade 316
- Grade 316 L
- Grade 316 Ti
- Grade 310 S
- Grade 317
- Grade 321
- Grade 904 L
- Hastelloy
- Duplex

### Carbon Steel

- ASTM A 36
- ASTM A 283 Grade C
- ASTM A 516 Grade 7
- ASTM A 517 Grade B
- ASTM A 612
- JIS G-3101 SS 400
- JIS G-3103 SB 410
- JIS G-3115 SPV 490
- H-II (Werk.Nr. 1.0425)
- HARDOX all grade
- WELDOX all grade

### Aluminium

- Al Mg 2,5
- Al Mg 4,5 Mn
- Al Mg Si 1



# 5-FACILITIES

## AREA OF FACILITIES

### FACTORY

Land Area : 12,159 m<sup>2</sup>  
Workshop : 10,000 m<sup>2</sup>  
Office Building Area : 500 m<sup>2</sup>

## TRANSPORTATION

Load limitation of applicable road or path : 60 tons  
Size limitation of applicable road or path : Width 4.5 meters  
Height 4.5 meters  
Length 40 meters

Distance from shop to :

Highway : Immediately  
Railway Station : Gresik -10 km from Workshop  
Airport : Juanda International Airport -45 km from Workshop  
Seaport : Gresik -10 km from Workshop

## LIST OF MACHINE

### TOOLS

Roll Machine, L = 3100 mm up to t = 80 mm  
Roll Machine, L = 3100 mm up to t = 25 mm  
Roll Machine, L = 2300 mm up to t = 10 mm  
Roll Machine, L = 2000 mm up to t = 6 mm  
Flanging Machine up to t = 32 mm; D = 3200 mm  
CNC Plasma Cutting Machine max. 35 mm 3000 x 12000 mm  
Lathe Machine, L = 1.5 m, 10 m  
Cutting Machines  
Bending Machine  
Plasma Jet Machine  
Press Hydraulix Machine = 250 Ton  
Welding Machines  
CO<sub>2</sub>/MAG/MIG Automatic Welding WM-500F  
Overhead Crane

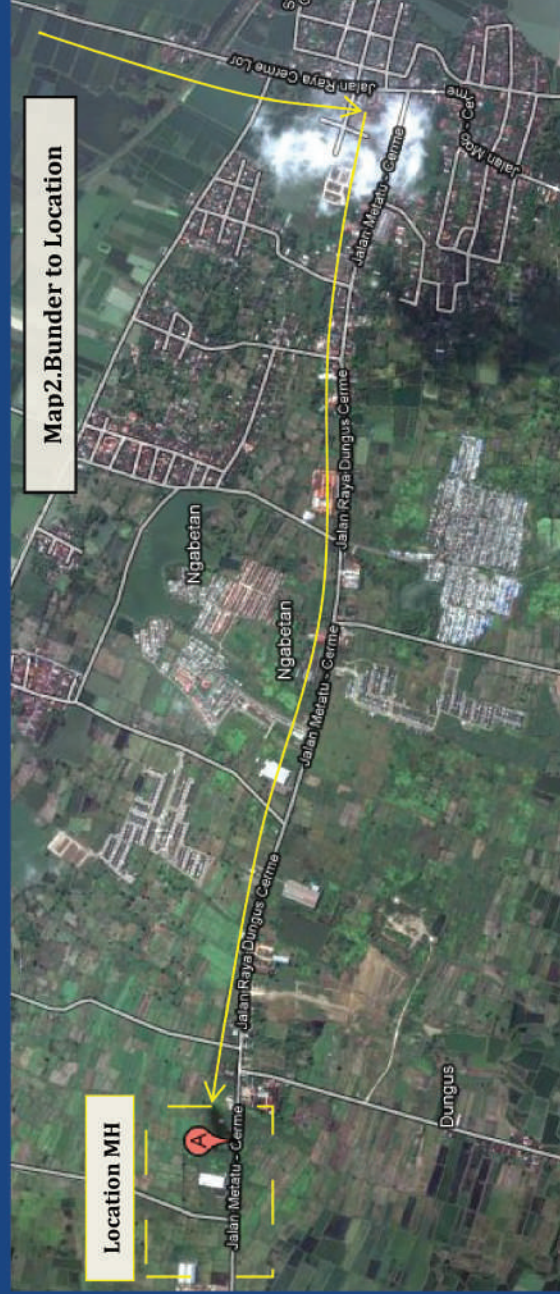




# 6-LOCATION MAP



Map 1. Exit Tol to Bunder



Map 2. Bunder to Location



Map 3. Location MH

**PT. Metal Hitech Engineering**  
Jl. Raya Cerme Metatu Km. 4, Desa Dungus  
Cerme - Gresik  
Jawa Timur